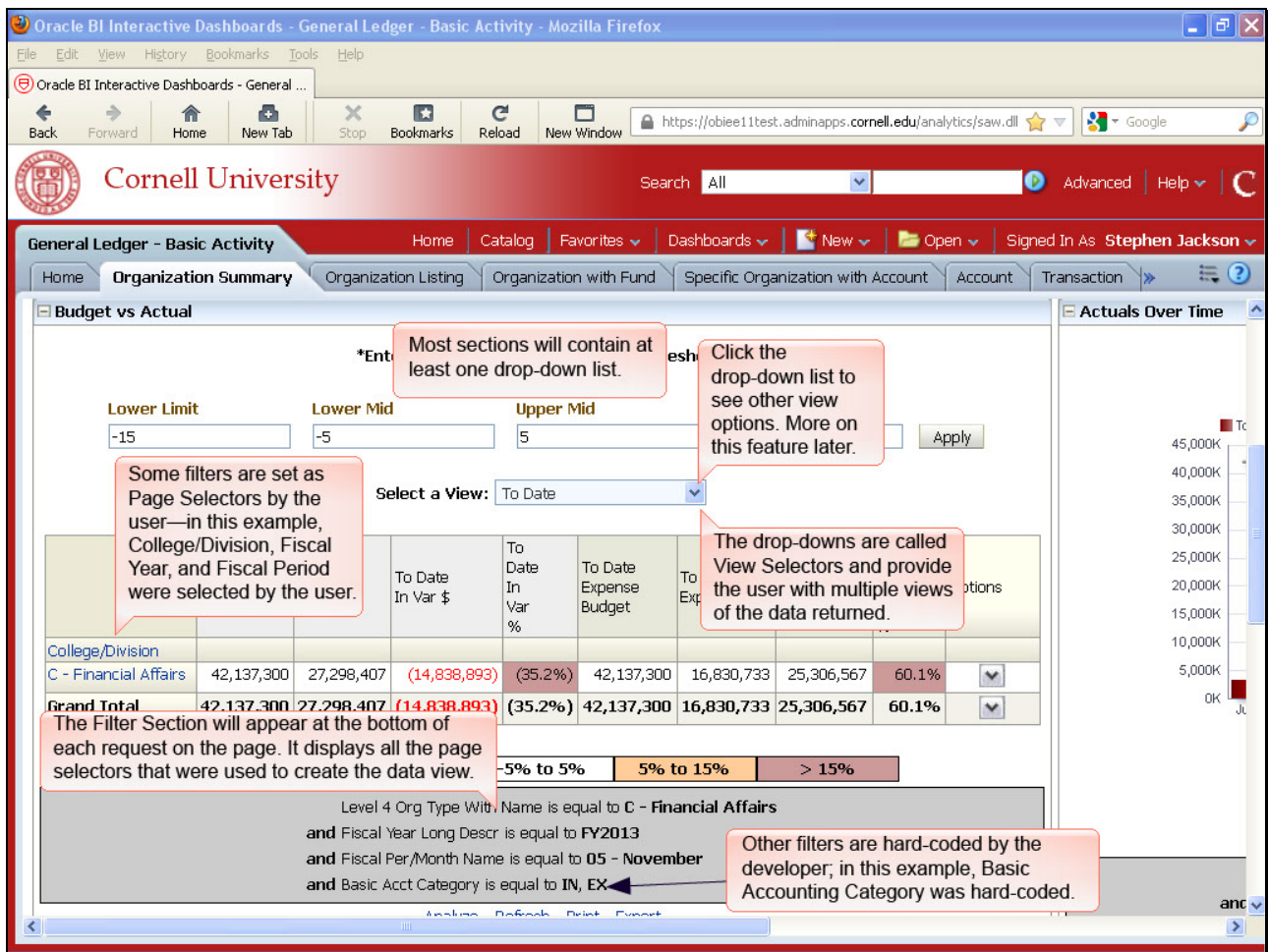


Chapter 5: View Selectors within Page Sections



Most sections will contain at least one drop-down list.

The drop-downs are called View Selectors and provide the user with multiple views of the data returned.

Click the drop-down list to see other view options. More on this feature later.

The Filter Section will appear at the bottom of each request on the page. It displays all the page selectors that were used to create the data view.

Some filters are set as Page Selectors by the user—in this example, College/Division, Fiscal Year, and Fiscal Period were selected by the user.

Other filters are hard-coded by the developer; in this example, Basic Accounting Category was hard-coded.

The screenshot shows the Oracle BI Interactive Dashboards interface. The browser title is "Oracle BI Interactive Dashboards - General Ledger - Basic Activity - Mozilla Firefox". The URL is "https://obiee11test.adminapps.cornell.edu/analytics/saw.dll". The user is signed in as "Stephen Jackson".

The main content area is titled "General Ledger - Basic Activity" and includes a navigation menu with "Home", "Catalog", "Favorites", "Dashboards", "New", "Open", and "Signed In As Stephen Jackson". Below this is a sub-menu with "Home", "Organization Summary", "Organization Listing", "Organization with Fund", "Specific Organization with Account", "Account", and "Transaction".

The "Budget vs Actual" section features a "View Selector" dropdown menu. A callout box states: "There may be several options available. This View Selector contains three." The dropdown menu is open, showing three options: "Selected Month", "To Date", and "To Date w/ Encumbrance". Another callout box states: "Selecting a different view will instantly change the data displayed." Below the dropdown is a table with columns: "College/Division", "Income Budget", "Income", "In Var \$", "var %", "Budget", and "Expense". The "Grand Total" row shows values: 0, 80,495, 80,495, 0.0%, 0, 41,986, 41,986, 0.0%.

The "Actuals Over Time" section shows a bar chart titled "To Date Expense" with a Y-axis from 0K to 45,000K and X-axis labels for Jul, Aug, Sep, and Oct. The chart shows increasing expense over time.

At the bottom, there are filter criteria: "Level 4 Org Type With Name is equal to C - Financial Affairs", "and Fiscal Year Long Descr is equal to FY2013", "and Fiscal Per/Month Name is equal to 05 - November", and "and Basic Acct Category is equal to IN, EX". There are also buttons for "Analyze", "Refresh", "Print", and "Export".

There may be several options available. This View Selector contains three.

Selecting a different view will instantly change the data displayed.